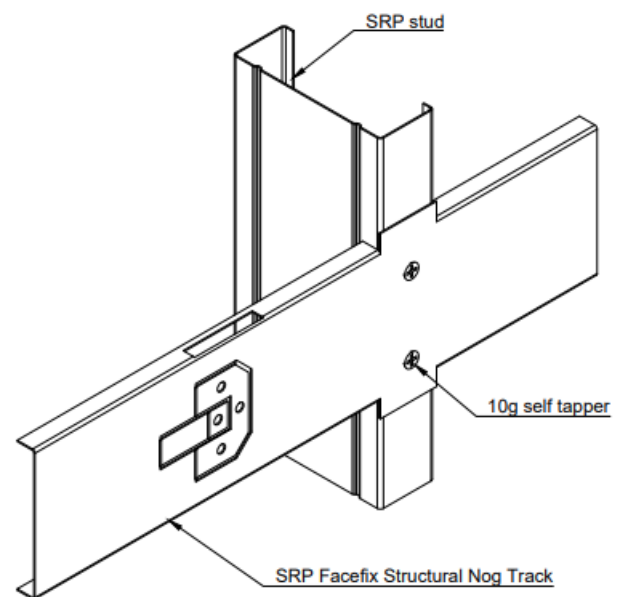
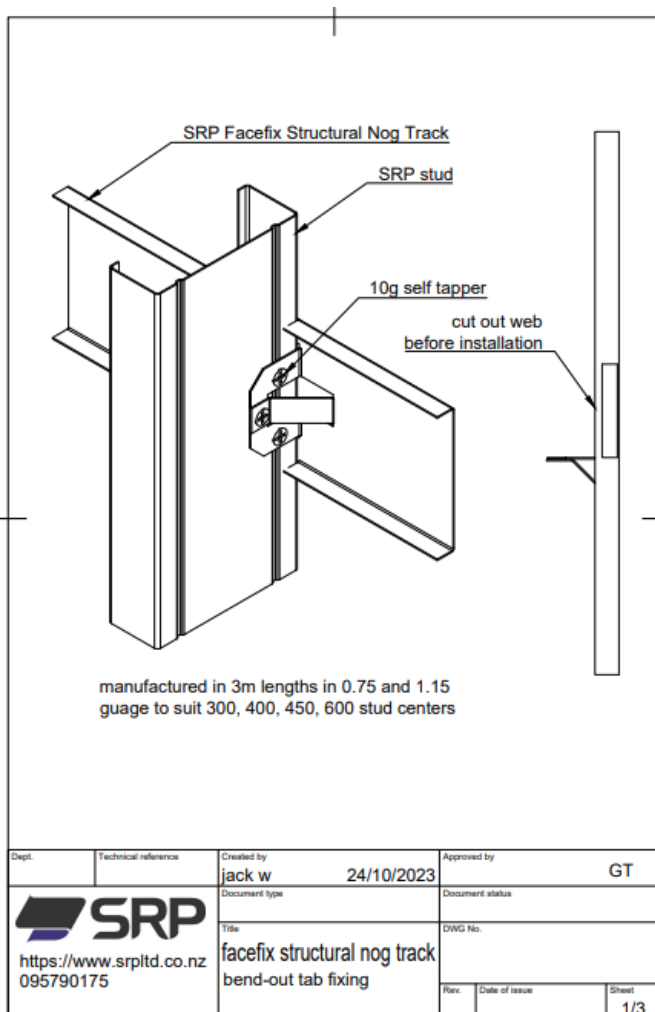


## SRP Facefix Structural Nog Track Installation

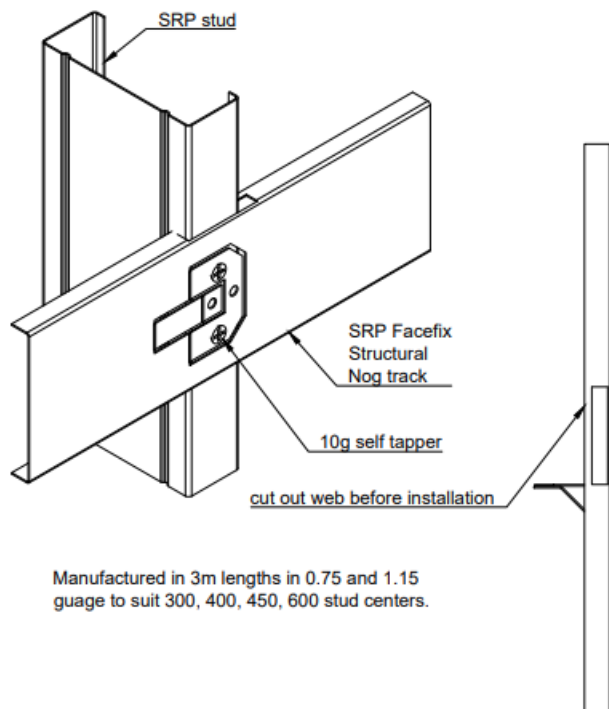
The SRP Facefix Structural Nogging track is designed as a solution where nogging is only required to one side of the partition wall; for walls which are already installed, or accessible from only one side.

- SRP Facefix Nog track is installed after the framing installation is completed.
- SRP Facefix Nog Track is suitable for use with any SRP steel stud size, and can be used with singular, boxed, back-to-back or staggered stud configurations.
- SRP Facefix Nog Track can be face-fixed directly, or screw-fixed to stud side edge using bend-out tab.
- Manufactured in 3m lengths in both 0.75 and 1.15BMT options to suit: 300, 400, 450, 600mm steel stud centres.



if nog centers change or an extra nog is required the legs may be snipped and folded to accommodate a stud wherever required

Please refer [www.srpltd.co.nz](http://www.srpltd.co.nz) for downloadable CAD Details:



B1.3.3 (f) – Earthquake  
B 1.3.3 (h) – Wind  
B 2.3.1 - Durability 50 years  
G 6.3.1 – The sound transmission class of walls, floors  
SRP Products are manufactured from Z275 Galvanised, G250 Steel - which is non-combustible.

#### Evidence - Methodology Summary of NZBC Compliance

1. ASNZ4600 (Steel chemical composition, gauge grade tolerance, galvanised coating, testing statistics, yield point etc.
2. NZS4129 (seismic)
3. NZS3404 (fabrication)
4. AS1397 (sheet and strip)
5. AS1538 (cold formed structures)
6. ASZLNZ1170 (steel structures)
7. AS/NZS2785 (Suspended Ceilings)

#### Compliance Pathways

B1/ VM1

An Engineered design is required - this needs to be done by a suitably qualified Engineer, who can also provide a PS-1.

#### B2 Durability

SRP uses GALVSTEEL® manufactured by New Zealand Steel. The continuous hot-dip galvanized Zinc coating conforms to the industry standard required for this application; Z275 (275 g/m<sup>2</sup> total). New Zealand Steel made GALVSTEEL® for framing is backed by a 50-year Durability Statement to demonstrate compliance with NZBC Clause B2-Durability, when used and maintained as referred to in the current New Zealand Steel's Durability Statement.

#### G6 Airborne

G6/ AS1

#### Criteria – Design Guidelines

Please contact Steel Rollformed Products Ltd - for Design Assistance, or visit [www.srpltd.co.nz](http://www.srpltd.co.nz)

An Engineered design is often required - this needs to be done by a suitably qualified Engineer, who can also provide a PS-1.

Please refer SRP Wall Systems/ Ceiling Systems Handbook for installation requirements or visit [www.srpltd.co.nz](http://www.srpltd.co.nz)

#### Installation Requirements

Please refer to SRP Wall Systems or SRP Ceiling Systems Handbooks (pdf).

For SRP Wall & Ceiling System Installation instructions/ downloadable CAD details refer: [www.srpltd.co.nz](http://www.srpltd.co.nz)

#### Maintenance

No maintenance required - SRP Galv. Steel products/ systems are typically concealed (within walls/ ceilings), once installed.

#### Scope of use

*This varies between SRP Products/ systems... please refer to individual SRP product installation instructions via SRP website.*

#### Technical Requirements of the NZBC

B 1.3.3 (a) – Self Weight